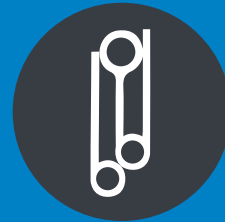


ROLLSEAL VALUE

Whether your goals focus on reducing expenses, increasing productivity, or ensuring customer satisfaction, the RollSeal Walk-In Door System will be a valuable tool. From the initial investment through the many fiscal benefits to your operation, our system will exceed your expectations.



NOTHING SEALS BETTER.
AUTOMATED DOOR SOLUTIONS DESIGNED FOR
ALL WALKIN COOLER/FREEZER APPLICATIONS.



RollSeal Automated Door Systems
P.O. BOX 99 BREMEN, ALABAMA 35033
888.765.5732 | WWW.ROLLSEAL.NET

PROUDLY MADE IN U.S.A.



THE **ONLY** EISA EXEMPT
FABRIC DOOR

50% Reduction in
Open Times

50% Reduction in
Footprint

ROLLSEAL TECHNOLOGY

- 3-LAYERS OF FABRIC CREATE DEAD AIR SPACE BETWEEN COOLED AND AMBIENT ENVIRONMENTS.
- TWO CONTINUOUS SEALS ON BOTH SIDES OF DOOR, FRONT AND BACK PANELS.
- USER DEFINED AUTO-CLOSURE FEATURE.





Model (RS-500 & RS-600) Comparison

RS-500 Cooler & Freezer

Speed: Up to 18" per Second

Application: Foot and pallet jack traffic

RS-600 Cooler & Freezer

Speed: Up to 48" per Second

Application: Fork-lift and automatic pallet jack traffic

Custom Sizes Available



ROI BY THE NUMBERS

LOW TEMP FREEZER




6 MONTHS

MEDIUM TEMP COOLER



12 MONTHS

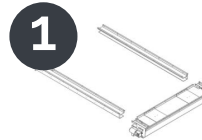
** ROI calculation based on a 6' wide by 9' high opening using DOE recognized Ashrae standards with medium temp cooler @ 35F and low temp freezer @ -10F and assuming a 75F backroom environment. Dollar volume savings were \$700/year on cooler door and \$2000/year on freezer.*

 estimates that **\$1 in energy savings** inside a grocery store is equivalent to **increasing counter sales by \$59, you do the math!**

RollSeal[®]

Easy Installation

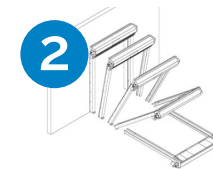
Compact design and easy 3-step installation simplifies upgrades to existing walk-ins and implementation into new construction.



1

STEP 1 - Placement

Slide tracks into header, bolt in place, plug in safety beams.



2

STEP 2 - Stand Up & Mount

Stand up in opening, square tracks to header and attach to wall and floor with appropriate fasteners.



3

STEP 3 - Electrical

Mount controller, plug in motor and signal connectors, wire to local power and run set-up program.



PATENTED SEALING TECHNOLOGY



AUTO-CLOSURE FEATURE SAVES ENERGY & MONEY



IMPACT RESISTANT DESIGN



IDEAL FOR NEW CONSTRUCTION & RETRO-FIT



REDUCES OPERATIONAL FOOTPRINT



COMPLETE INSTALL IN 30 MINUTES

ADDITIONAL BENEFITS

- Significantly Lower Maintenance Costs than Conventional Swing or Slider Doors.
- Smaller Footprint of the RollSeal Door Maximizes the Space Usage of the Surrounding Area by 50% Over Conventional Swing or Slider Doors.